

Enabling web services on enterprise-managed HP printers



To allow your printer to access HP's cloud solutions, you first need to connect your printer to the HP cloud by enabling web services on the printer. You can enable web services in two ways:

- [On the printer control panel](#), via the HP Command Center app.
- [Via the device's Embedded Web Server \(EWS\)](#), which you can connect to through your browser.

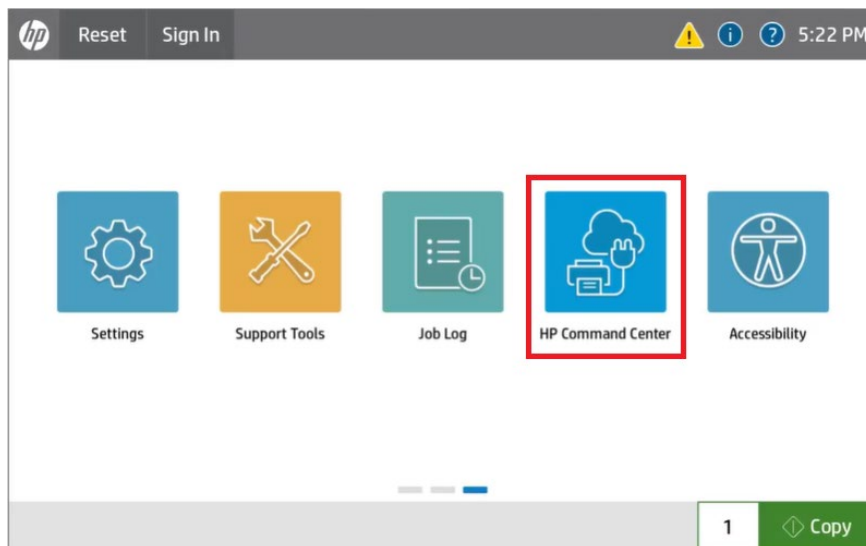
Before beginning, ensure you have:

- Connected your printer to the internet, either over Wi-Fi or Ethernet.
- The administrator access credentials for the printer.
- Your device's IP address, if you intend to use EWS.

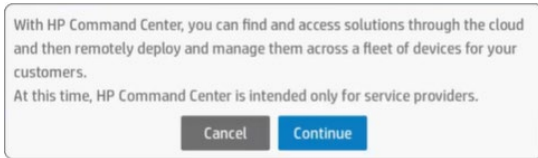
Enabling web services via the HP Command Center app on the printer control panel

To enable web services using the HP Command Center app:

1. On your printer's control panel, open the HP Command Center app.

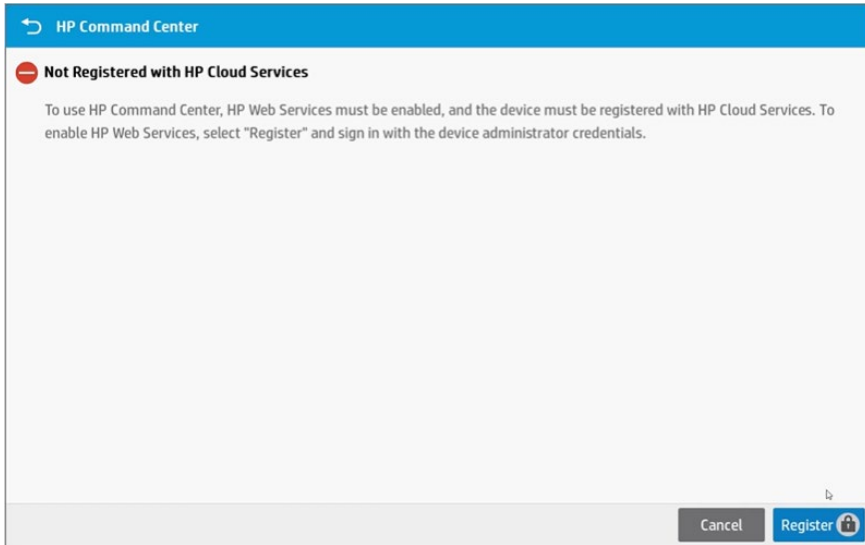


2. An informational dialog appears, informing you of the capabilities of the HP Command Center app.



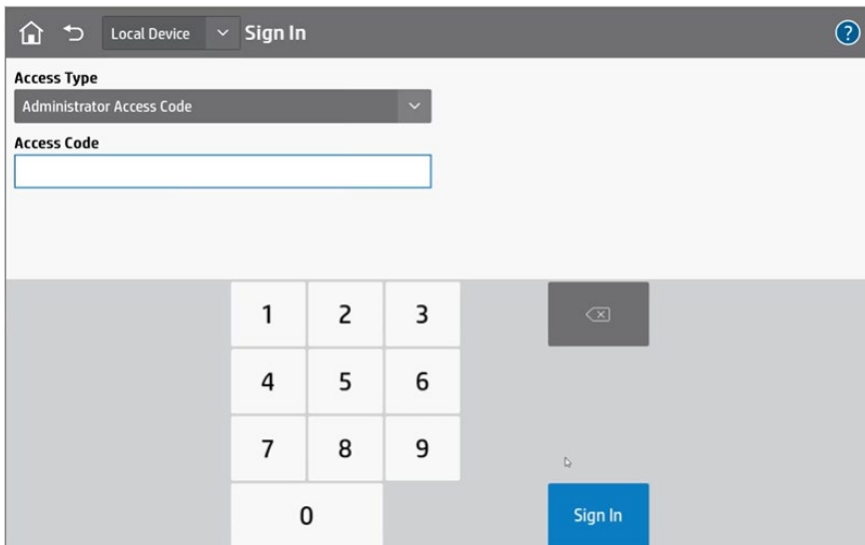
3. Select **Continue**.

The HP Command Center app checks the printer to determine whether web services is enabled. If web services is not enabled for the printer, the **Not Registered with HP Cloud Services** screen displays.



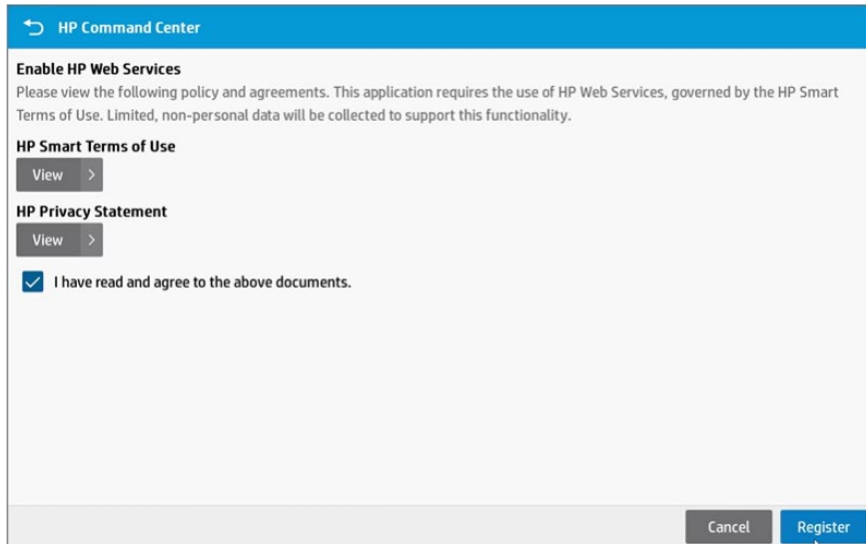
4. Click **Register** to enable web services.

If you have not logged in to the device with the device administrator credentials, the Credentials screen appears.



5. In the Credentials screen, complete the following steps:
 - a. In the **Access Type** dropdown, select **Administrator Access Code**.
 - b. In the **Access Code** field, enter the administrative passcode for the printer.
 - c. Select **Sign In**.

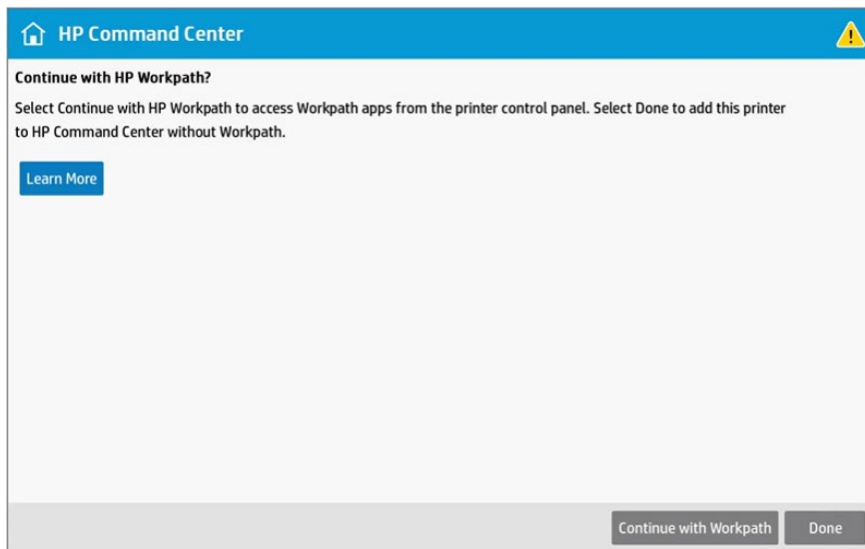
The Enable HP Web Services screen appears.



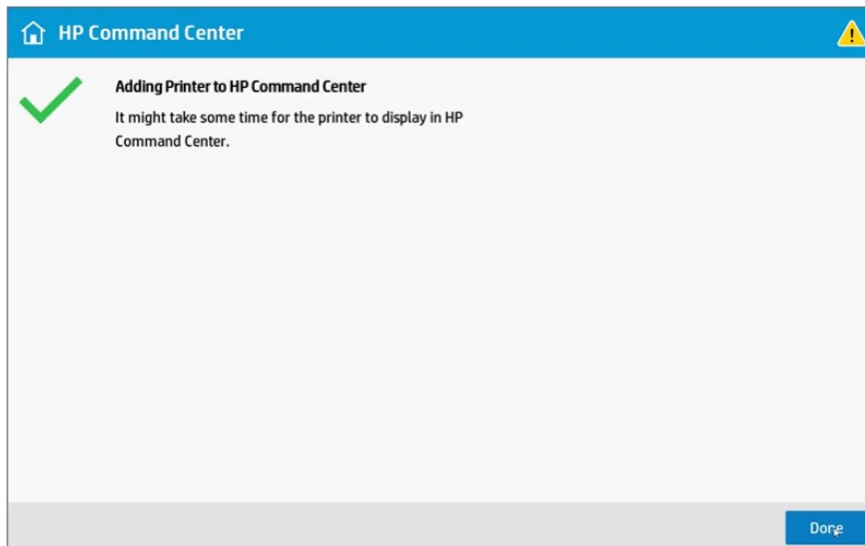
6. In the Enable HP Web Services screen:
 - a. View the **HP Smart Terms of Use** and **HP Privacy Statement** documents.
 - b. Select **I have read and agree to the above documents**.
 - c. Select **Register**.
7. In the HP Cloud Connection dialog that appears, select **Continue** to allow HP to collect data from your device.



8. In the Continue with HP Workpath screen, click **Done**.



9. Click **Done** to complete the process.



Enabling web services through the printer's embedded web server (EWS)

Before you can connect to your printer's embedded web server, you'll need the IP address for the printer.

To enable web services through the EWS:

1. In the browser, enter your printer's IP address. The Home page of the printer's embedded web server appears.

HP Color LaserJet MFP E47528
HP Color LaserJet MFP E47528

Search by Keyword **Welcome**

Information

Device Status

Configuration Page
Supplies Status Page
Event Log Page
Usage Page
Device Information
Control Panel Snapshot
Printable Reports and Pages
Open Source Licenses

Device Status

Sleep mode on

Supplies

Black Cartridge Order W9090MC	90%*	Cyan Cartridge Order W9091MC	100%*	Magenta Cartridge Order W9093MC	100%*	Yellow Cartridge Order W9092MC	100%*
---	------	--	-------	---	-------	--	-------

* Estimated levels. Actual levels may vary.

Media

Input/Output	Status	Capacity	Size	Type
Tray 1	<input type="checkbox"/> Empty	50 sheets	Any Size	Any Type
Tray 2	<input checked="" type="checkbox"/> OK	250 sheets	A4 (210x297 mm)	Plain
Standard bin	<input type="checkbox"/> OK	150 sheets	N/A	N/A

2. In the top-right corner of the screen, select **Sign-In**.

HP LaserJet Flow MFP M630
HP LaserJet Flow MFP M630

Search by Keyword **Welcome**

Information

3. In the Sign-In screen, enter the printer's credentials:
 - a. In the Sign-in Method drop-down, select **Local Device**.
 - b. In the **Local Device Account** drop-down, select **Administrator**.
 - c. In the **Password** field, enter the administrative passcode for the password.
 - d. Select **Sign In**.

HP Color LaserJet MFP E47528
HP Color LaserJet MFP E47528

Search by Keyword **Welcome**

Information

Sign In

Sign-In Method

Local Device Account

Password

EWS returns to the Home screen, with the top menu bar populated with the printer's administration menus.

- In the top menu, select **Web Services**.

If web services are not already enabled, the Web Services Settings Setup page appears informing you that web services are not enabled.

HP Color LaserJet MFP E47528
NPI427300

User:Administrator
Sign Out

Information General Copy/Print Scan/Digital Send Fax Supplies Troubleshooting Security **HP Web Services**

Configuration
Web Services Setup
Web Proxy
Smart Cloud Print

Web Services Setup

HP Web Services Setup

Enable HP Web Services to connect this product to HP Connected on the web. This automatically creates an account for this product on HPConnected.com and unlocks capabilities such as HP Connected, which allows printing from anywhere at any time by using the product's e-mail address.

To enable HP Connected and register the product with the HP Cloud the product will transmit system/printer information if a network connection is made. [Click here for more details.](#)

Web Services Status	Disabled
Printer connected to HP Connected	Not Connected

- On the Web Services Setup page, select **Enable Web Services**.

HP Color LaserJet MFP E47528
NPI427300

User:Administrator
Sign Out

Information General Copy/Print Scan/Digital Send Fax Supplies Troubleshooting Security **HP Web Services**

Configuration
Web Services Setup
Web Proxy
Smart Cloud Print

Web Services Setup

Enable HP Web Services to connect this product to HP Connected on the web. This automatically creates an account for this product on HPConnected.com and unlocks capabilities such as HP Connected, which allows printing from anywhere at any time by using the product's e-mail address.

To enable HP Connected and register the product with the HP Cloud the product will transmit system/printer information if a network connection is made. [Click here for more details.](#)

Web Services Status	Disabled
Printer connected to HP Connected	Not Connected

Enable HP Web Services to connect this product to HP Connected on the Internet.

Enable HP Web Services

Use the HP Connected website

Use HP's free HP Connected website to set up increased security for HP Connected, specify the email addresses that are allowed to send email to your printer, and access other free services.

6. EWS attempts to enable web services for the printer. If successful, it displays a confirmation page showing the web services status for the printer as **Enabled**.

The screenshot shows the HP Color LaserJet MFP E47528 EWS interface. At the top, the HP logo and model name are displayed, along with the user name 'Administrator' and a 'Sign Out' button. A navigation bar includes 'Information', 'General', 'Copy/Print', 'Scan/Digital Send', 'Fax', 'Supplies', 'Troubleshooting', 'Security', and 'HP Web Services'. The left sidebar lists 'Configuration', 'Web Services Setup', 'Web Proxy', and 'Smart Cloud Print'. The main content area is titled 'Web Services Setup' and features a green success message: 'Success: HP Web Services successfully enabled'. Below this is a table for 'HP Web Services and HPconnected.com' with the following data:

Web Services Status	Enabled
Printer connected to HP Connected	Connected

Below the table, there is an 'HP ePrint' section with a toggle set to 'ON' and a 'Turn OFF' button, followed by a 'More information.' link. The 'HP ePrintCenter' section displays the 'Product E-mail Address' as 'w949hk74@hpeprint.com' and the 'Printer Code' as 'JZJBDHCNCRQ6R64Y'. At the bottom, there are two buttons: 'Remove' (to remove the printer from HP Connected and HP Web Services) and 'Refresh' (to refresh the device email address from HP Connected).